



# Ficam<sup>®</sup> W

## INSECTICIDE

- ✓ Superior against wasps, ants, fleas and bedbugs
- ✓ Does not repel or excite the insect
- ✓ Provides prolonged, residual insecticidal activity

Ficam W  
contains bendiocarb 80% w/w



Fatal if swallowed.

Fatal if inhaled.

Very toxic to aquatic life with long lasting effects.

Wear protective gloves/protective clothing/eye protection/face protection.

IF exposed or concerned: Call a POISON CENTER or doctor/physician.

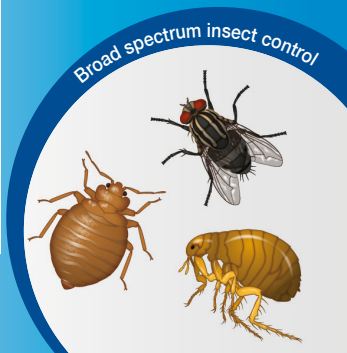
Dispose of contents/container to a licensed hazardous-waste disposal contractor or collection site except for empty clean containers which can be disposed of as non-hazardous waste.

To avoid risks to human health and the environment, comply with the instructions for use.

HSE 5390 PCS 93413

GB06119025F - RA4 - ARTICLE 06086143

# 500 g e



**SAFETY**  
The COSHH (Control of Substances Hazardous to Health) Regulations 2004 (as amended) apply to the use of this product at work.  
Avoid excessive contamination of coveralls.  
**DO NOT CONTAMINATE FOODSTUFFS, EATING UTENSILS OR FOOD CONTACT SURFACES.**  
This material and its container must be disposed of in a safe way.  
**AFTER CONTACT WITH SKIN, WASH IMMEDIATELY** with plenty of water and seek medical advice immediately.

When using do not eat or drink.

**DO NOT BREATHE SPRAY MIST.**

Do not empty into drains.

Do not contaminate ground, waterbodies or watercourses with chemicals or used container. REMOVE OR COVER ALL FISH TANKS AND BOWLS before application.

UNPROTECTED PERSONS AND ANIMALS SHOULD BE KEPT AWAY FROM TREATED AREAS UNTIL SURFACES ARE DRY.

DO NOT APPLY DIRECTLY TO LIVESTOCK AND POULTRY.

EXCLUDE ALL PERSONS AND ANIMALS DURING TREATMENT.

COVER ALL WATER STORAGE TANKS before application.

ALL BATS ARE PROTECTED UNDER THE WILDLIFE AND COUNTRYSIDE ACT 1981. BEFORE TREATING ANY STRUCTURE USED BY BATS, CONSULT NATURAL ENGLAND, SCOTTISH NATURAL HERITAGE OR THE COUNTRYSIDE COUNCIL FOR WALES.

IN IRELAND, ALL BATS ARE PROTECTED UNDER SCHEDULE 5 OF THE WILDLIFE ACTS (1976 AND 2000). BEFORE TREATING ANY STRUCTURE USED BY BATS, CONSULT THE NATIONAL PARKS AND WILDLIFE SERVICE.

HAZARDOUS TO BEES.

ACTION SHOULD BE TAKEN TO PREVENT FORAGING BEES GAINING ACCESS TO TREATED NESTS, PREFERABLY BY REMOVING THE COMBS OR BLOCKING THE NEST ENTRANCE. DO NOT APPLY DIRECTLY TO ANIMALS. \*EXCLUDE ANIMALS DURING APPLICATION.

DO NOT APPLY TO CLOTHING OR HUMAN BEDDING.

DO NOT USE ON FILTER BEDS AT SEWAGE TREATMENT WORKS.

In case of insufficient ventilation wear suitable respiratory equipment.  
Guidance on suitable respiratory protective equipment and eye protection is provided in HSE Booklet HS(G)53: "The Selection, Use and Maintenance of Respiratory Protective Equipment - A Practical Guide".

WASH HANDS AND EXPOSED SKIN before meals and after use.

**FOR USE ONLY AS AN INSECTICIDE.**

KEEP IN A SAFE PLACE.

Keep out of the reach of children.

Keep locked up.

In case of accident or if you feel unwell, seek medical advice immediately (show the label where possible).

If swallowed, seek medical advice immediately and show this container or label.

Keep away from food drink and animal feeding stuffs.

This product contains an anticholinesterase carbamate compound. DO NOT USE if under medical advice NOT to work with such compounds.

**Areas of use**

Ficam W is recommended for the control of cockroaches, ants, fleas, flies, mosquitoes, bed bugs, carpet pests, wasps, bees, moths, silverfish and other bristle tails, firebrats, beetles, earwigs, crickets, booklice, spiders, woodlice, centipedes, millipedes, ticks and thrips.

Ficam W can be used in and around buildings including museums, vehicles, kitchens, military establishments, hospitals, factories, warehouses, ships and aircraft. (Aircraft : Ficam W complies with the requirements of AMS1450A and Boeing D6-7127.)

For use in domestic premises and in animal husbandry situations such as livestock barns and small animal houses e.g. Dog kennels and slaughter houses. Not for use in catteries or

where cats are enclosed in a cage/carrier. Not to be applied in the presence of livestock/animals.

For use in continuously occupied areas as a band/spot or crack and crevice treatment only.

Ficam W can also be used outdoors at refuse tips and sewage works (not for use on sewage works filter beds).

Application can be to hard porous and non-porous surfaces, hard furnishings, and soft furnishings (including mattresses,) not for use on clothing or bedding.

**DIRECTIONS FOR USE**

**Application**

Ficam W should be applied in mixture with water through hand-held or knapsack sprayers using the following procedure.

1. Ensure that sprayer is clean and free of oily residues. If necessary wash out the sprayer with water and detergent before use.

2. Fill the sprayer with the required volume of water. Add the required quantity of Ficam W. Close the sprayer and shake before use. Re-shake after periods of rest.

3. Apply as a coarse spray. For treatment of exposed surfaces use a flat-fan nozzle with an output of 0.5 – 0.7 litre per minute. Such nozzles are normally marked 8002 or 02F80.

4. To spray a single band e.g. at wall/floor junctions hold the nozzle approximately 0.5 metre from the surface to be sprayed and spray at a speed of 0.5 metre per second. This will produce a sprayed band 0.8 metre wide. To spray large areas of surface e.g. carpets, proceed as above but spray overlapping bands 0.5 metre apart. This will ensure an even coverage of spray.

5. To spray cracks and crevices, use a pin-stream nozzle or special crack and crevice extension.

**Sprayed Surfaces :** Ficam W sprays can be applied to any surface which is not damaged by water alone. Ficam W will remain active for many weeks at the normal rate and greater residuality will be achieved at the special rate. The residual life of the deposit will vary depending upon the cleanliness and nature of the surface to which it is applied. Therefore re-treat as necessary. Ficam W treated premises can be re-occupied by children, pets and other animals once the sprayed surfaces are dry.

**Cockroaches:** Use one (50 ml = 15 g) measure in 5 litres of water. Spray hiding, runway and scavenging areas paying particular attention to cracks and crevices and areas behind or under machinery, kitchen equipment or pipework, which are usual cockroach harbours. In situations where very heavy cockroach infestations are present, where an extended period of control is required, e.g. ships and aircraft, or where conditions are particularly unhygienic, use two (2 x 50 ml = 30 g) measures in 5 litres of water. For complete eradication of infestations, it is essential to conduct spray treatment with Ficam W in conjunction with treatment of inaccessible areas such as service ducts and roof voids with a suitable insecticidal dust such as Ficam D.

**Ants:** Use one (50 ml = 15 g) measure in 5 litres of water. Spray in and around nests, runs and foraging areas. A barrier spray of Ficam W around buildings, paying particular attention to doors, windows and other entry points, will prevent entry of foraging ants from outside.

**Fleas:** Use one (50 ml = 15 g) measure in 5 litres of water. Spray floor coverings and furniture particularly in areas likely to be infested including sleeping areas of dogs and cats but not directly on people, animals or bedding.

**Flies:** Use one (50 ml = 15 g) measure in 5 litres of water. Add 50 g of sugar and stir to dissolve. Identify where flies settle and spray the surface. The sugar acts as a bait encouraging flies to remain on the treated surface long enough to pick up a lethal dose of insecticide.

**Adult Mosquitoes:** Use one (50 ml = 15 g) measure in 5 litres of water.

Spray ceilings, walls and other surfaces where mosquitoes settle.

**Stored Product Pests:** Use one (50 ml = 15 g) measure in 5 litres of water.

Spray the entire structure of storage areas after cleaning but exclude areas, which come into contact with food.

**Bed Bugs:** Use one (50 ml = 15 g) measure in 5 litres of water. Spray bed frames and mattresses and cracks and crevices in adjacent wall and floor areas. Do not spray bed linen or other materials which come into direct contact with occupants of the bed.

**Carpet pests:** Use one (50 ml = 15 g) measure in 5 litres of water. Spray infested carpets paying particular attention to edges of fitted carpets.

**Wasps and Wild Bees:** Use one (50 ml = 15 g) measure in 5 litres of water. Spray nest entrances and surrounding areas thoroughly.

\*This product should only be used against feral bees if other methods of control are not feasible or found to be ineffective.

Members of the British Beekeepers Association (01203 696679) and the National Bee Unit (01904 462510) can provide advice and contacts to remove accessible feral honey bee colonies.

\*Action should be taken to prevent foraging bees gaining access to treated bees nests preferably by removing the combs or blocking the nest entrance.

**Silverfish and Firebrats:** Use one (50 ml = 15 g) measure in 5 litres of water. Spray cracks and crevices in cupboards and bookshelves and around kitchen fittings.

**Other Crawling Pests** including Ground Beetles, Earwigs, Crickets, Booklice, Spiders, Woodlice, Centipedes, Millipedes, Ticks and Thrips. Use one (50 ml measure = 15 g) measure in 5 litres of water. Spray wherever these pests are found in and around buildings.

**Disposal**

Dispose of contents/container to a licensed hazardous-waste disposal contractor or collection site except for empty clean containers which can be disposed of as non-hazardous waste.

**STATUTORY CONDITIONS OF APPROVAL RELATING TO USE**

FOR USE ONLY BY PROFESSIONAL OPERATORS.

Restrictions: NOT TO BE USED IN CATTERIES OR WHERE CATS ARE ENCLOSED IN CAGE/CARRIER.

SUMMARY OF DOSE RATES	
<b>Normal Rate</b> for cockroach control in most situations and for the control of all other crawling insect pests and adult mosquitoes in all situations	50 ml measure = 15 g in 5 litres water (0.3%) 10 ml measure = 3 g in 1 litre of spray.(0.3%)
<b>Special Rate</b> for control of cockroaches in special situations i.e. • where heavy infestations are present. • where an extended period of control is required. • where conditions are particularly unhygienic.	2 x 50 ml measure = 30 g in 5 litres water (0.6%)
<b>Fly Control</b> including houseflies and blowflies	50 ml measure = 15 g + 50 g sugar in 5 litres water (0.3% + 1% sugar)
5 litres of spray covers approximately 125 m <sup>2</sup> . The measure referred to in the Directions for Use is the larger of the two measures enclosed with this pack and holds 50 ml = 15 g of Ficam W sufficient for 5 litres of spray. The smaller measure holds 10 ml = 3 g Ficam W, sufficient for 1 litre of spray.	

Users must comply in full with all their legal responsibilities under the Control of Pesticides Regulations 1986 (as amended), including complying with all Conditions of Approval.

**READ ALL PRECAUTIONS BEFORE USE.**

**HSE 5390 PCS 93413**

**FIRST AID**

If Ficam W is swallowed induce vomiting unless the patient is unconscious or partly unconscious. The patient must be kept strictly at rest and be examined by a doctor or taken to hospital without delay.

When stored in a dry place at a temperature not exceeding 35°C Ficam W has a shelf life of 2 years.

This product is approved under The Control of Pesticides Regulations 1986 for use as directed (HSE 5390).

HSE 5390 PCS 93413

RA4 - FICAM W - GB - 500 G - GB06003906F - *ARTICLE 06086143*

For 24 hour emergency information contact

Bayer CropScience Ltd.

From the UK: 0800220876

From the Republic of Ireland:

Freephone: 1800409399

Approval Holder:

Bayer CropScience Ltd.

Ficam® is a registered trademark of Bayer.

© Copyright of Bayer 2014 – All rights reserved.

**Bayer**

Bayer CropScience Limited

230 Cambridge Science Park

Milton Road

Cambridge CB4 0WB

From the UK and the Republic

of Ireland: 00800 12149451

www.pestcontrol-expert.com

for MSDS and full label